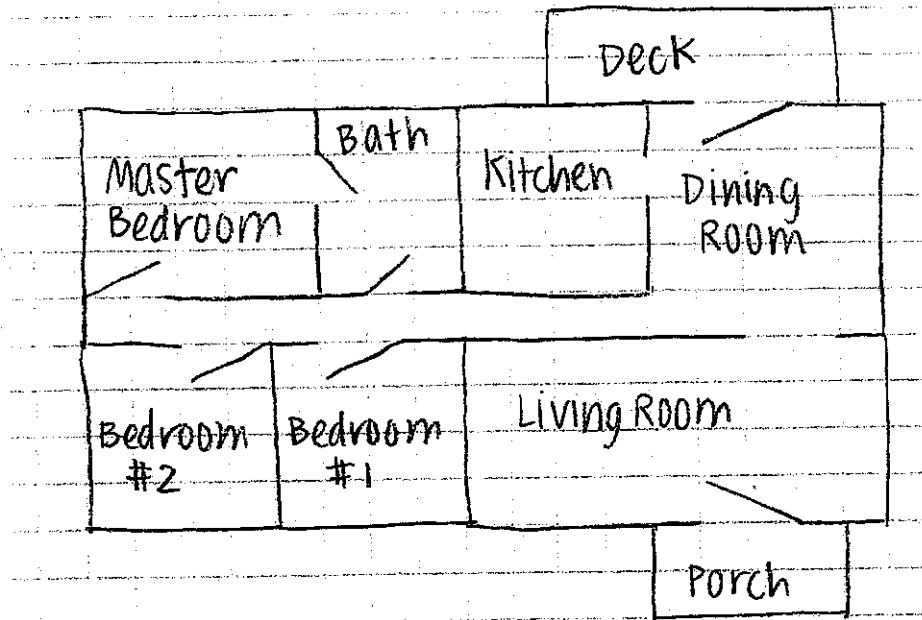


Blueprint Enlargement Project

Name _____ Hour _____



You work for Bulldogs Builders, Inc., and the above picture is a blueprint for a house the company is about to construct. Your boss has asked you to put together a presentation to be shown to potential buyers, but in the presentation the house needs to be bigger than it is in the blueprint. On a piece of graph paper reconstruct the blueprint to scale so that it is twice as large as the one shown here.

Your enlarged picture will be graded in the following way:

- accurate dimensions on your enlargement (10 points)
- each room is labeled (5 points)
- neatness (5 points)

Once the potential buyers have seen your enlarged blueprint, they have a few questions that your boss would like you to answer for them using your picture and the following scale: 1 unit in your picture : 2 feet in the actual house. You must show your work when answering, and each correct answer will be worth 1 point.

1) What is the perimeter of the living room?

2) What is the area of the deck?

3) What is the perimeter of bedroom #1?

4) How much more area does the master bedroom have compared to bedroom #2?

5) What is the perimeter of the entire house including the porch and deck?

Extension:

A. Choose one room, and add furniture. On the original picture, draw the furniture accurately. On your enlargement, accurately draw the furniture, using the correct scale.

B. What do you notice about the original dimensions and the enlargement dimensions?